



evergreen

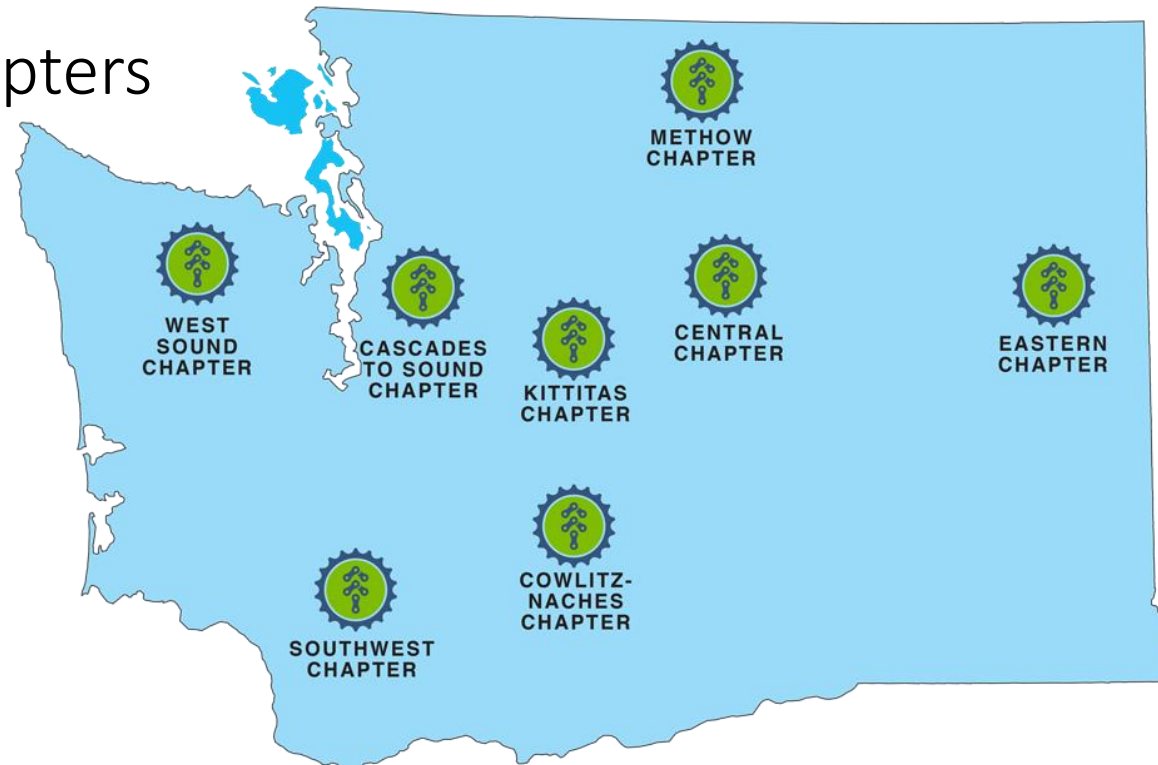
MOUNTAIN BIKE ALLIANCE

Volunteer Program

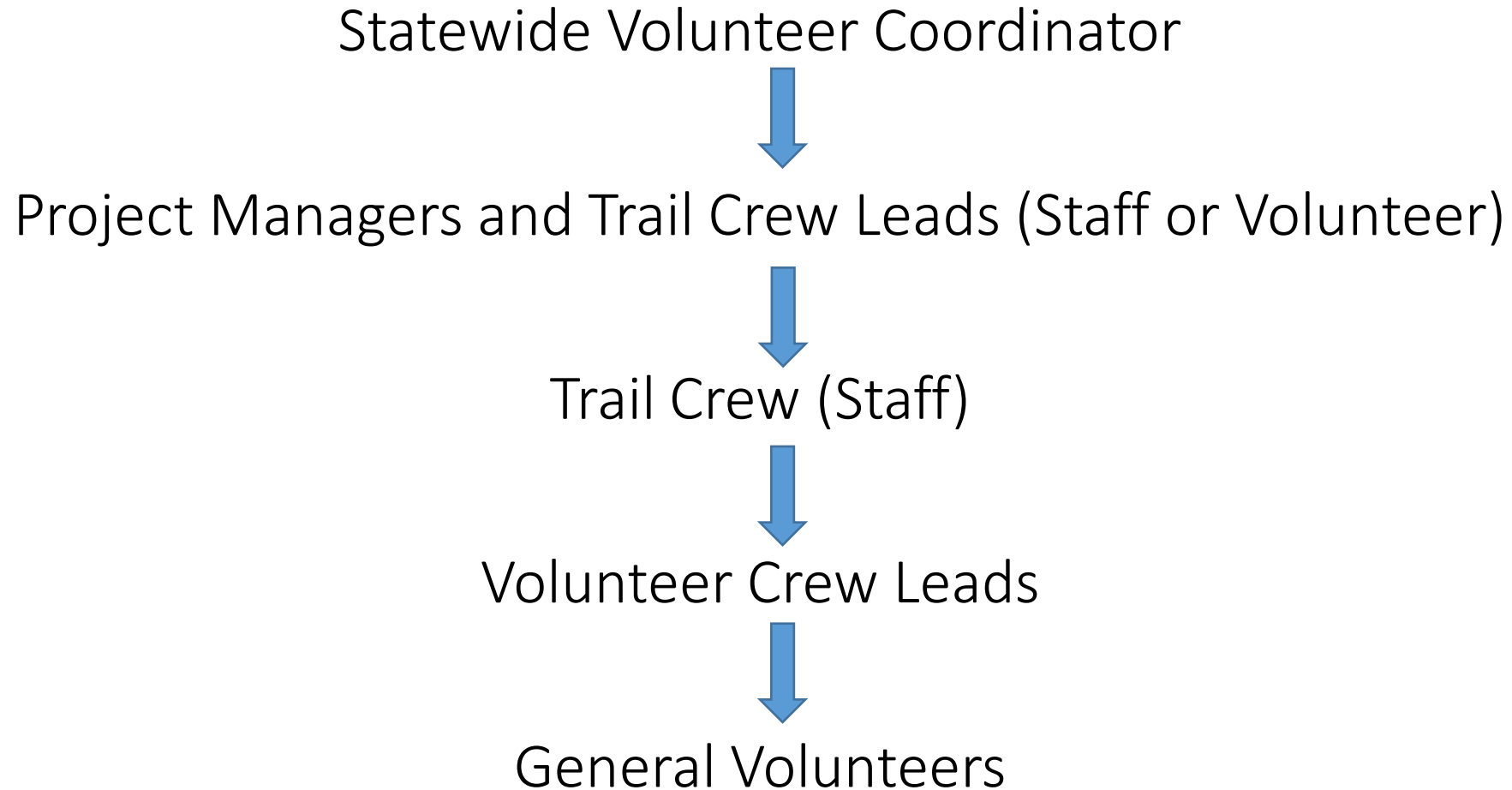


What is the Evergreen Mountain Bike Alliance?

- The nation's largest statewide mountain bike organization
- Over 8,000 members who contribute nearly 30,000 Volunteer Hours Per Year
- 8 Regional Chapters



Volunteer Structure



Volunteer Crew Leader Progression

- Attend Multiple Work Parties
- Attend Evergreen Trail School (4 Hr Classroom session, 4 Hr Work Party/Field session focused on Trail Maintenance)
- Receive USFS Chainsaw Certification (if vol. wants to run a saw)
- Show interest in leading volunteer work parties*
- Show substantial trail building/maintenance knowledge and skills
- Receive approval from land managers and trail staff to lead work parties without staff supervision

Challenges

- Volunteer Retention
- Volunteer Burn Out (Especially Vol. Crew Leaders)
- Volunteer Hour Tracking
- Lots of Volunteers, Not enough Leaders
- Volunteer Recognition

Successes

- By providing training and education, our volunteers feel empowered to take on trail projects and tasks on their own or in their own small groups
- Scored #1 in application process for WA State's Trail Maintenance Grants (RTP Grant)
- Each Chapter has retained a small group of dedicated Volunteer Leaders
- We continue to recruit many new volunteers for trail work/projects
- Local and Bike Industry companies continue to sponsor work party events

Solutions

- Continue to improve volunteer education and training opportunities
- “Product Testing” events for regular trail volunteers on new, unopened trails
- Volunteer Spotlights on website/social media
- Volunteer Appreciation Party – food and drink provided with updates on trail projects and awards to outstanding volunteers



Thank You!

codyo@evergreenmtb.org